

CSS Albemarle

Gun	1	2	3	4	5	6	7	8	9	10	11	12	13	14	15	16	17
	1	1	1	2	2	3	3	4	5	6	7	9	11	13	15	18	21

Normal	3-5	Large Arc	
Morale -1			
Morale -2			
Morale -3	1-2	Medium Arc	
Morale -4			
Morale -5			
Morale -6	1-2	Large Arc	Reverse

Draft 1																	
Draft 2																	

1	1	1	1
2	2	2	2
3	3	3	3
4	4	4	4
5	5	5	5
6	6	6	6
7	7	7	7
8	8	8	8
9	9	9	9
10	10	10	10
11	11	11	11
12	12	12	12
13	13	13	13
14	14	14	14
15	15	15	15
16	16	16	16
17 * Check Firers Gun	17 * Check Firers Gun	17 * Check Firers Gun	17 * Check Firers Gun
18	18	18	18
19	19	19	19
20	20	20	20
21 Casemate	21 Casemate	21 Casemate	21 Casemate
22 Casemate	22 Hull Section 1	22 Hull Section 1	22 Casemate
23	23 Hull Section 2	23 Hull Section 2	23
24	24	24	24
25 Pilot House	25 Waterline	25 Waterline	25 Stack
26	26 Gun Port	26 Gun Port	26
27	27	27	27
28	28	28	28
29 Hull	29 Pilot House	29 Pilot House	29 Hull
30 Lucky Shot	30 Lucky Shot	30 Lucky Shot	30 Lucky Shot
31	31	31	31
32	32	32	32
33 Casemate	33 Casemate	33 Casemate	33 Casemate
34	34	34	34
35	35	35	35
36 Casemate	36 Casemate	36 Casemate	36 Casemate
37 Pilot House	37 Stack	37 Stack	37 Stack
38 Waterline	38 Waterline	38 Waterline	38 Waterline





CSS Charleston

Gun	1	2	3	4	5	6	7	8	9	10	11	12	13	14	15	16	17
	1	1	1	1	2	2	3	3	3	4	5	6	8	10	12	15	18
	1	1	1	2	2	3	3	4	5	6	7	9	11	13	15	18	21
	1	1	2	2	3	3	4	5	6	7	9	11	14	16	19	23	27

Normal
 Morale -1
 Morale -2
 Morale -3
 Morale -4
 Morale -5
 Morale -6

4-6 Large Arc
 1-3 Medium Arc
 1-3 Large Arc Reverse

Draft 3
 +2 / -2 Emergency
 +1 / -1 Normal

Ram Rating: 9
 Mass Value: 4
 Spar Torpedo

1	1	1	1
2	2	2	2
3	3	3	3
4	4	4	4
5	5	5	5
6	6	6	6
7	7	7	7
8	8	8	8
9	9	9	9
10	10	10	10
11	11	11	11
12	12	12	12
13	13	13	13
14	14	14	14
15	15	15	15
16	16	16	16
17 * Check Firers Gun	17 * Check Firers Gun	17 * Check Firers Gun	17 * Check Firers Gun
18	18	18	18
19	19	19	19
20	20	20	20
21 Casemate	21 Casemate Section 1	21 Casemate Section 1	21 Casemate
22 Casemate	22 Casemate Section 2	22 Casemate Section 2	22 Casemate
23	23	23	23
24	24	24	24
25 Hull	25 Hull Section 1	25 Hull Section 1	25 Hull
26	26 Hull Section 2	26 Hull Section 2 m	26 3 2
27	27 Hull Section 3	27 Hull Section 3	27
28	28 Waterline		



CSS Fredricksburg

Gun	Ranges					Armament Table		Armor Damage - Roll D10+ Range Bonus																
	PB+7	S+5	M+3	L+1	Ext	ROF	Rating	1	2	3	4	5	6	7	8	9	10	11	12	13	14	15	16	17
6.4" 1B Brooke Rifle	0-5	6-11	12-18	19-25	26-35	1	1	1	1	1	2	2	3	3	4	5	6	7	9	11	13	15	18	21
11" Dahlgren SB	0-3	4-7	8-12	13-15	16-18	2	1	1	1	2	2	3	4	5	6	8	10	12	15	18	21	24	27	30
8" 2B Brooke Rifle	0-6	7-16	17-26	27-38	39-45	2	1	1	2	3	4	6	8	10	12	14	17	20	23	27	31	35	40	45

Crew

Normal
Morale -1
Morale -2
Morale -3
Morale -4
Morale -5
Morale -6

Flotation

Draft 2
Draft 3

Structural

Speed Bands & Maneuverability

1-4 Large Arc

1-2 Large Arc Reverse

Engine Power

+1 / -1 Normal

Notes

Ram Rating: 8
Mass Value: 4

Spar Torpedo

Hit Allocation Table			
Bow	Port Side	Starboard Side	Stern
1	1	1	1
2	2	2	2
3	3	3	3
4	4	4	4
5	5	5	5
6	6	6	6
7	7	7	7
8	8	8	8
9	9	9	9
10	10	10	10
11	11	11	11
12	12	12	12
13	13	13	13
14	14	14	14
15	15	15	15
16	16	16	16
17 * Check Firers Gun	17 * Check Firers Gun	17 * Check Firers Gun	17 * Check Firers Gun
18	18	18	18
19	19	19	19
20	20	20	20
21 Casemate	21 Casemate Section 1	21 Casemate Section 1	21 Casemate
22 Casemate	22 Casemate Section 2	22 Casemate Section 2	22 Casemate
23	23	23	23
24	24 Gun Port	24 Gun Port	24
25 Hull	25 Hull Section 1	25 Hull Section 1	25 Hull
26	26 Hull Section 2	26 Hull Section 2	26
27	27	27	27
28	28	28	28
29 Pilot House	29 Pilot House	29 Pilot House	29 Stack
30 Lucky Shot	30 Lucky Shot	30 Lucky Shot	30 Lucky Shot
31	31 Casemate Section 2	31 Casemate Section 2	31
32	32 Casemate Section 1	32 Casemate Section 1	32
33 Casemate	33 Waterline	33 Waterline	33 Casemate
34	34	34	34
35	35 Casemate Section 1	35 Casemate Section 1	35
36 Casemate	36 Casemate Section 2	36 Casemate Section 2	36 Casemate
37 Pilot House	37 Stack	37 Stack	37 Stack
38 Waterline	38 Waterline	38 Waterline	38 Waterline
39 Gun Port	39 Gun Port	39 Gun Port	39 Gun Port
40 Deck	40 Deck	40 Deck	40 Deck

General Damage Locations

Pilot House

Deck

Bow Damage Locations

Casemate

Hull

Waterline

Port Damage Locations

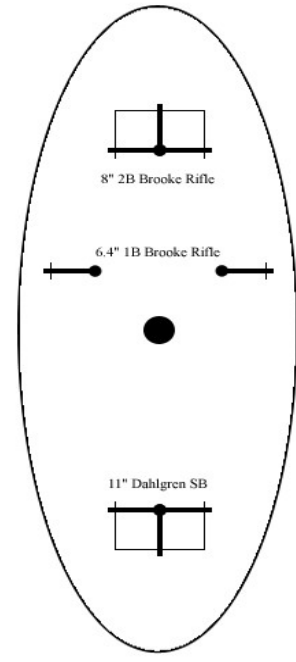
Casemate Section 1

Casemate Section 2

Hull Section 1

Hull Section 2

Waterline



Starboard Damage Locations

Casemate Section 1

Casemate Section 2

Hull Section 1

Hull Section 2

Waterline

Stern Damage Locations

Casemate

Hull

Waterline

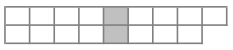
Ranges					Armament Table		Armor Damage																	
+7	S+5	M+3	L+1	Ext	ROF	Rel. Rating	1	2	3	4	5	6	7	8	9	10	11	12	13	14	15	16	17	
3-4	5-7	8-10	11		1	1	1	1	1	1	2	2	3	3	4	4	5	5	6	6	7	7	8	9
4-7	8-12	13-16	17-26		1	3	1	1	1	1	2	2	3	3	4	4	5	5	6	6	7	7	8	9
7-14	15-25	26-35	36-51		1	1	1	1	2	2	3	3	4	4	5	5	6	6	7	7	8	9	10	11

Speed Bands & Maneuverability

1-3 Large Arc

1-2 Large Arc Reverse

Flotation



Engine Power

+1 / -1 Emergency

Structural



Notes

Ram Rating: 3
Mass Value: 3

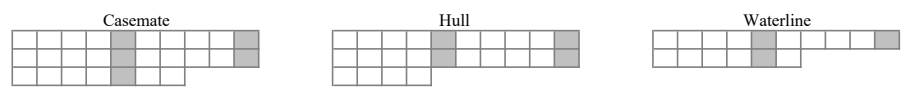
Hit Allocation Table

	Port Side	Starboard Side	Stern
1	1	1	1
2	2	2	2
3	3	3	3
4	4	4	4
5	5	5	5
6	6	6	6
7	7	7	7
8	8	8	8
9	9	9	9
10	10	10	10
11	11	11	11
12	12	12	12
13	13	13	13
14	14	14	14
15	15	15	15
16	16	16	16
17	* Check Firers Gun	* Check Firers Gun	* Check Firers Gun
18			
19			
20			
21	Casemate	21 Casemate Section 1	21 Casemate
22	Casemate	22 Casemate Section 2	22 Casemate
23		23	23
24		24 Gun Port	24
25	Hull	25 Hull Section 1	25 Hull
26	Casemate	26 Hull Section 2	26 Casemate
27		27 Casemate Section 2	27
28		28 Casemate Section 1	28
29	Pilot House	29 Pilot House	29 Stack
30	Lucky Shot	30 Lucky Shot	30 Lucky Shot
31		31 Casemate Section 2	31
32		32 Casemate Section 1	32
33	Casemate	33 Waterline	33 Casemate
34		34 Gun Port	34
35		35 Casemate Section 1	35
36	Casemate	36 Casemate Section 2	36 Casemate
37	Pilot House	37 Stack	37 Stack
38	Waterline	38 Waterline	38 Waterline
39	Gun Port	39 Gun Port	39 Gun Port
40	Deck	40 Deck	40 Deck

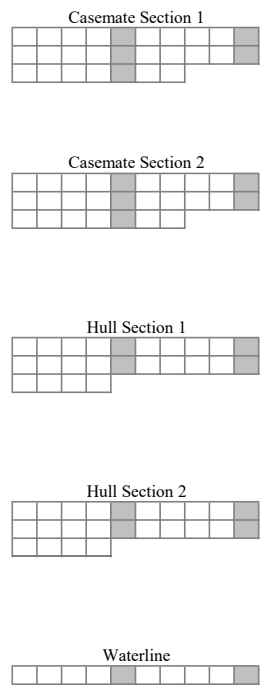
General Damage Locations



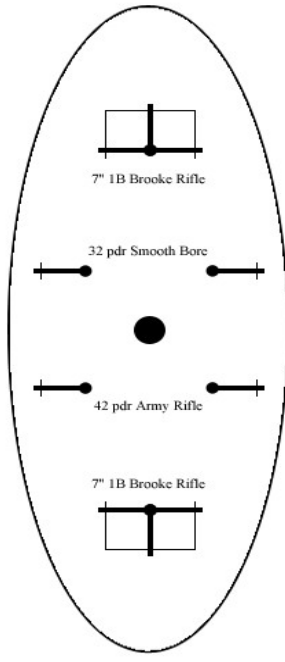
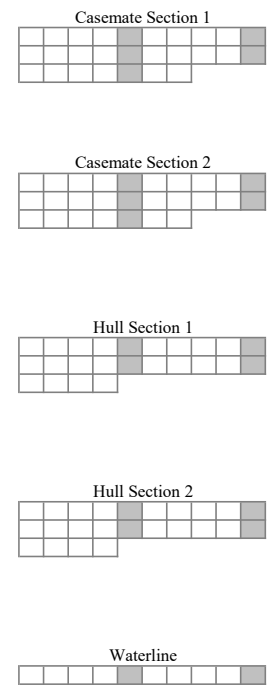
Bow Damage Locations



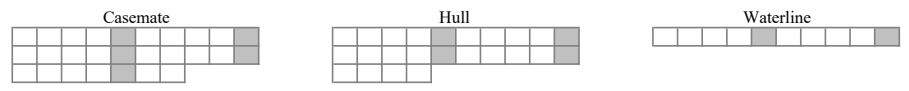
Port Damage Locations



Starboard Damage Locations



Stern Damage Locations



CSS Manassas

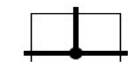
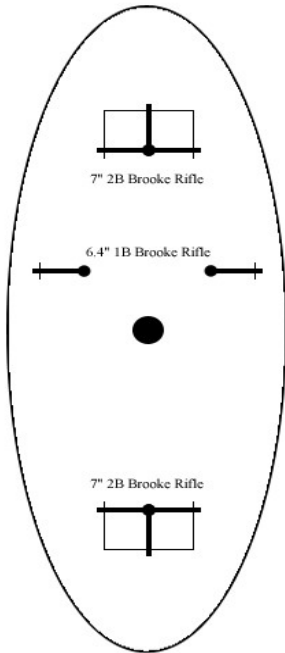
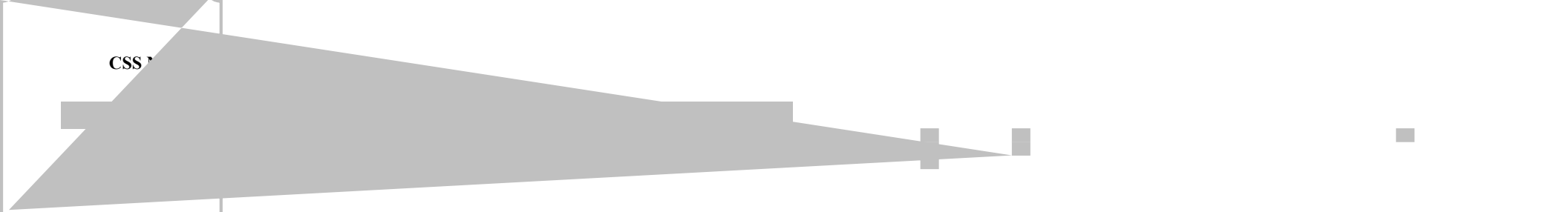
Gun 1 2 3 4 5 6 7 8 9 10 11 12 13 14 15 16 17
1 1 1 1 2 2 3 3 3 4 4 5 7 9 11 13 15

Normal
Morale -1

3-4 Medium Arc



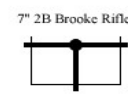
CSS



7" 2B Brooke Rifle



6.4" 1B Brooke Rifle



7" 2B Brooke Rifle

CSS Savannah

Armament Table

Gun	Ranges					Rel.		Armor Damage - Roll D10+ Range Bonus																
	PB+7	S+5	M+3	L+1	Ext	ROF	Rating	1	2	3	4	5	6	7	8	9	10	11	12	13	14	15	16	17
6.4" 1B Brooke Rifle	0-5	6-11	19-25	26-35		1	1	1	1	1	2	2	3	3	4	5	6	7	9	11	13	15	18	21
7" 2B Brooke Rifle		7-14	15-25	26-35			1	1	1	2	2	3	4	5	6	8	10	12	15	18	21	24	27	30

Crew

Normal
Morale -1
Morale -2
Morale -3
Morale -4
Morale -5
Morale -6



Speed Bands & Maneuverability

4-7 Large Arc
1-3 Small Arc
1-2 Large Arc Reverse

Flotation

Draft 2
Draft 3



Engine Power

+2 / -2 Emergency
+1 / -1 Normal

Structural



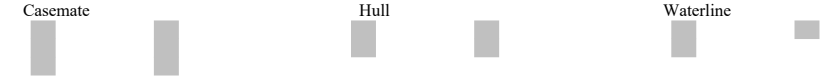
Notes

Ram Rating: 7
Mass Value: 4
Spar Torpedo

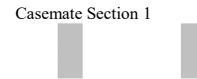
General Damage Locations



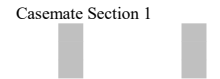
Bow Damage Locations



Port Damage Locations



Starboard Damage Locations



Hit Allocation Table

Bow		Starboard Side		Stern
1		1		1
2		2		2
3		3		3
4		4		4
5		5		5
6		6		6
7		7		7
8		8		8
9		9		9
10		10		10
11		11		11
12		12		12
13		13		13
14		14		14
15		15		15
16		16		16
17 * Check Firers Gun	17 * Check Firers Gun	17 * Check Firers Gun	17 * Check Firers Gun	17 * Check Firers Gun
18		18		18
19		19		19
20		20		20
21 Casemate	21 Casemate Section 1	21 Casemate Section 1	21 Casemate	21 Casemate
22 Casemate	22 Casemate Section 2	22 Casemate Section 2	22 Casemate	22 Casemate
23		23		23
24	24 Gun Port	24 Gun Port	24	24
25 Hull	25 Hull Section 1	25 Hull Section 1	25 Hull	25 Hull
26	26 Hull Section 2	26 Hull Section 2	26	26
27		27		27
28		28		28
29 Pilot House	29 Pilot House	29 Pilot House	29 Stack	29 Stack
30 Lucky Shot	30 Lucky Shot	30 Lucky Shot	30 Lucky Shot	30 Lucky Shot
31	31 Casemate Section 2	31 Casemate Section 2	31	31
32	32 Casemate Section 1	32 Casemate Section 1	32	32
33 Casemate	33 Waterline	33 Waterline	33 Casemate	33 Casemate
34		34		34
35	35 Casemate Section 1	35 Casemate Section 1	35	35
36 Casemate	36 Casemate Section 2	36 Casemate Section 2	36 Casemate	36 Casemate
37 Pilot House	37 Stack	37 Stack	37 Stack	37 Stack
38 Waterline	38 Waterline	38 Waterline	38 Waterline	38 Waterline
39 Gun Port	39 Gun Port	39 Gun Port	39 Gun Port	39 Gun Port
40 Deck	40 Deck	40 Deck	40 Deck	40 Deck

Casemate Section 2

Hull Section 1

Hull Section 2

Waterline

Casemate

Casemate Section 2

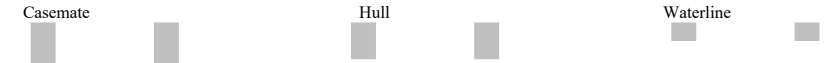
Hull Section 1

Hull Section 2

Waterline

Waterline

Stern Damage Locations



CSS Texas

Armament Table

Gun	Ranges					ROF	Rating	Armor Damage - Roll D10+ Range Bonus																
	PB+7	S+5	M+3	L+1	Ext			1	2	3	4	5	6	7	8	9	10	11	12	13	14	15	16	17
7" 1B Brooke Rifle	0-6	7-14	15-25	26-35	36-51	1	1	1	1	2	2	3	3	4	5	6	7	9	11	14	16	19	23	27
8" 2B Brooke Rifle	0-6	7-15	17-26	27-38	39-45	2	1	1	2	3	4	6	8	10	12	14	17	20	23	27	31	35	40	45
11" Brooke SB	0-3	4-5	6-9	10-12	13-19	2	1	1	2	3	4	6	8	10	12	14	17	20	23	27	31	35	40	45

Crew

Normal	
Morale -1	
Morale -2	
Morale -3	
Morale -4	
Morale -5	
Morale -6	

Speed Bands & Maneuverability

5-8	Large Arc	
1-4	Medium Arc	
1-3	Large Arc	Reverse

Flotation

Draft 3	
---------	--

Engine Power

+3 / -3	Emergency
+2 / -2	Normal

Structural

--

Notes

Ram Rating: 6
Mass Value: 4

Hit Allocation Table

Bow	Port Side	Starboard Side	Stern
1	1	1	1
2	2	2	2
3	3	3	3
4	4	4	4
5	5	5	5
6	6	6	6
7	7	7	7
8	8	8	8
9	9	9	9
10	10	10	10
11	11	11	11
12	12	12	12
13	13	13	13
14	14	14	14
15	15	15	15
16	16	16	16
17 * Check Firers Gun	17 * Check Firers Gun	17 * Check Firers Gun	17 * Check Firers Gun
18	18	18	18
19	19	19	19
20	20	20	20
21 Casemate	21 Casemate Section 1	21 Casemate Section 1	21 Casemate
22 Casemate	22 Casemate Section 2	22 Casemate Section 2	22 Casemate
23	23 Hull Section 1	23 Hull Section 1	23
24	24 Hull Section 2	24 Hull Section 2	24
25 Hull	25 Casemate Section 2	25 Casemate Section 2	25 Hull
26 Casemate	26 Casemate Section 1	26 Casemate Section 1	26 Casemate
27	27 Waterline	27 Waterline	27
28	28 Gun Port	28 Gun Port	28
29 Pilot House	29 Pilot House	29 Pilot House	29 Stack
30 Lucky Shot	30 Lucky Shot	30 Lucky Shot	30 Lucky Shot
31	31 Casemate Section 2	31 Casemate Section 2	31
32 Casemate	32 Casemate Section 1	32 Casemate Section 1	32 Casemate
33 Gun Port	33 Waterline	33 Waterline	33 Gun Port
34	34 Gun Port	34 Gun Port	34
35	35 Casemate Section 1	35 Casemate Section 1	35
36 Casemate	36 Casemate Section 2	36 Casemate Section 2	36 Casemate
37 Pilot House	37 Stack	37 Stack	37 Stack
38 Waterline	38 Waterline	38 Waterline	38 Waterline
39 Gun Port	39 Gun Port	39 Gun Port	39 Gun Port
40 Deck	40 Deck	40 Deck	40 Deck

General Damage Locations

Pilot House		Deck	
-------------	--	------	--

Bow Damage Locations

Casemate		Hull		Waterline	
----------	--	------	--	-----------	--

Port Damage Locations

Casemate Section 1	
Casemate Section 2	
Hull Section 1	
Hull Section 2	
Waterline	

Starboard Damage Locations

Casemate Section 1	
Casemate Section 2	
Hull Section 1	
Hull Section 2	
Waterline	

Stern Damage Locations

Casemate		Hull		Waterline	
----------	--	------	--	-----------	--



CSS Virginia

Gun					1	2	3	4	5	6	7	8	9	10	11	12	13	14	15	16	17
					1	1	1	1	2	2	3	3	3	4	5	6	8	10	12	15	18
					1	1	1	2	2	3	3	4	5	6	7	9	11	13	15	18	21
					1	1	2	2	3	3	4	5	6	7	9	11	14	16	19	23	27

Normal																							
Morale -1										3-5	Very Large Arc												
Morale -2										1-2	Large Arc												
Morale -3																							
Morale -4																							
Morale -5																							
Morale -6										1-2													





CSS Virginia II

Gun	1	2	3	4	5	6	7	8	9	10	11	12	13	14	15	16	17
	1	1	1	2	2	3	3	4	5	6	8	10	12	14	17	20	24
	1	1	2	2	3	4	5	6	8	10	12	15	18	21	24	27	30
	1	2	3	4	6	8	10	12	14	17	20	23	27	31	35	40	45

Normal
 Morale -1
 Morale -2
 Morale -3
 Morale -4
 Morale -5
 Morale -6

5-8 Very Large Arc
 1-4 Large Arc
 1-2 Large Arc Reverse

+2 / -2 Emergency
 +1 / -1 Normal

Ram Rating: 9
 Mass Value: 4
 Spar Torpedo

1	1	1	1
2	2	2	2
3	3	3	3
4	4	4	4
5	5	5	5
6	6	6	6
7	7	7	7
8	8	8	8
9	9	9	9
10	10	10	10
11	11	11	11
12	12	12	12
13	13	13	13
14	14	14	14
15	15	15	15
16	16	16	16
17 * Check Firers Gun	17 * Check Firers Gun	17 * Check Firers Gun	17 * Check Firers Gun
18	18	18	18
19	19	19	19
20	20	20	20
21 Casemate	21 Casemate	21 Casemate	21 Casemate
22 Waterline	22	22	22 Waterline



